

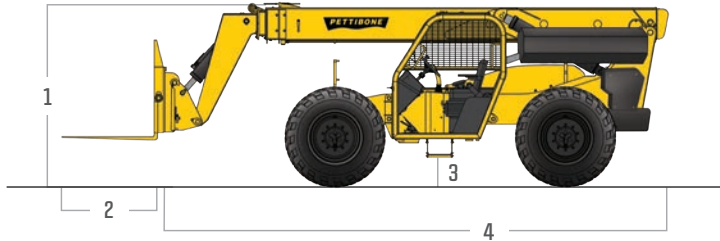
PETTIBONE®

» **EXTENDO 944B**
TIER 4 FINAL - SPECIFICATIONS



Combining high lift capacity with exceptional maneuverability, the Pettibone® Extendo™ 944B telehandler is ideal for challenging load handling applications. The 944B offers outstanding visibility from the cab, allowing operators to work safely and efficiently. Responsive hydraulics let users move loads with confidence, while superior engineering and service maximize uptime and consistently keep the machine working hard.

SPECIFICATIONS



DIMENSIONS

1	Overall Height	7' 7" (231 cm) boom down
2	Fork Carriage	48" (122 cm) standard
3	Ground Clearance	18" (46 cm)
4	Overall Length	22' (671 cm) to fork frame
	Overall Width	8' 6" (259 cm)
	Pallet Forks	2.25 x 4 x 48" standard
	Approx. Operating Weight	24,600 lbs (11,158 kg)

ENGINE

Model/Power	117 HP (87 kW) Cummins® QSJ3.8 Tier 4 turbo diesel with electronic control & protection and SCR aftertreatment
DEF Tank	5 gal. (19 L)
Fuel Tank	32.6 gal. (123 L)

HYDRAULICS

System	Pressure comp, axial piston
Features	Auxiliary boom tip hydraulics, quick disconnect for attachments
Controls	Single joystick, pilot operated

FEATURES & OPTIONS

OPERATOR CAB

Unmatched visibility Adjustable suspension seat with seat belt	Fully adjustable right-side armrest Full set of gauges for instant machine status
---	--

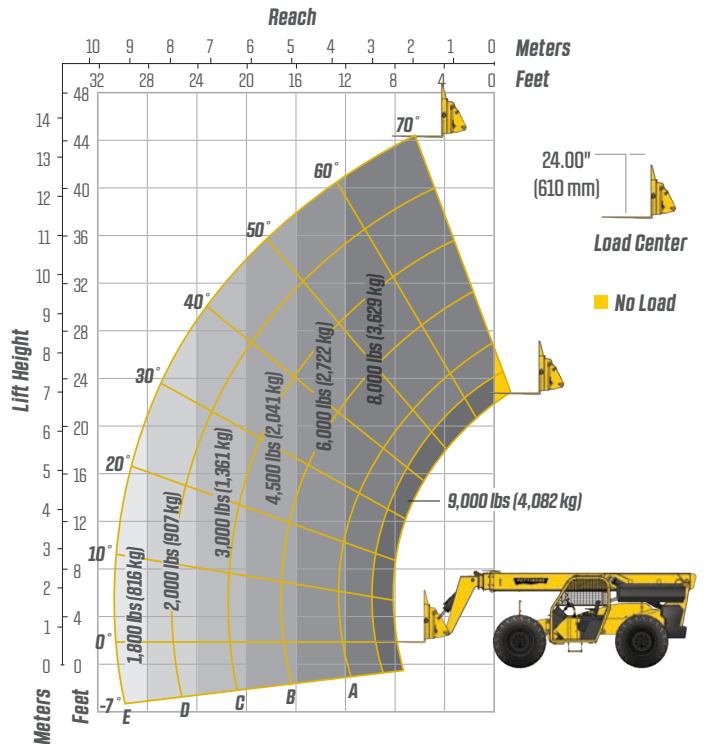
AVAILABLE ATTACHMENTS

Pallet, lumber and block forks Side tilt carriages +/- 10° Side-swing carriage	Truss boom Utility buckets
--	-------------------------------

OPTIONS

Light packages Foam-filled tires Solid tires	Enclosed cab (HWD) Air-conditioned cab Outriggers
--	---

LIFT PERFORMANCE



PERFORMANCE

Max Load Capacity	9,000 lbs (4,082 kg)
Maximum Lift Height	44' 4" (1,351 cm)
Maximum Forward Reach	30' 3" (922 cm) at 24" LC
Below Grade Reach	3' 6" (107 cm)
Maximum Travel Speed	20 mph (32 km/h)
Turning Radius	14' 1" (429 cm)
Frame	24° of leveling (12° right and left); rear axle stabilization system; fits under 8' doorway
Transmission	Dana® T12000 Series, 3-speed Powershift, forward & reverse; Parking brake engaged transmission declutch
Axles	Dana 212 Series: Inboard Service, SAHR brakes, 4-wheel drive, 45% front limited slip differential
Steering	4 wheel, 2 wheel and crab steer
Brakes	Oil-immersed inboard disc service brakes, integral park brake
Tires	13.00 x 24, 16 ply
Boom	Automatic fork leveling without slave cylinders; 2 wide stance, heavy-duty lift cylinders

* Specifications are subject to change.

PETTIBONE®

PETTIBONE, LLC

1100 Superior Avenue
Baraga, MI 49908

P: 800.467.3884
info@gopettibone.com
www.gopettibone.com

**1 - 2 - 3
WARRANTY**

1 Year	Full machine and attachment
2 Years	Powertrain and major hydraulic components
3 Years	Machine structure

WARRANTY